



Epworth Education Trust's Infinite Eight Strategy

Introduction

If we consult the Oxford English dictionary we are told that **school** is *a place where children go to be educated*. This definition is rather limiting and quite undersells the valuable role school can play in a child's development. It implies a passive process suggesting education will be done to children rather than define school as a place where learning is an active process in which they can engage. It is quite ironic and certainly worth noting that the word **school** comes from the Greek word '*schole*' which means the *leisure to be free of work to learn, think, reflect and educate oneself*. Often what drives activity in schools is the need to prepare for exams and tests and whilst school needs to serve this purpose it is possible to overlook the importance of time for the '*leisure to learn, think and reflect*'.

The 'Infinite Eight' strategy is designed to support our schools to implement '*schole*' in its truest sense. It is an offer that takes into account the element of school life beyond the taught curriculum. It is hoped that by offering these opportunities, children will be active in their learning, enjoying the leisure to learn and follow personal journeys of self-discovery and reflection. It is important to note that this is not a process that can be measured with pre-determined outcomes in fact it is not at all clear nor will we ever know the extent of the impact of these experiences on each child. However, it is hoped that it will support children on their way to become well-rounded individuals with the aspiration to be the best version of themselves.

'Who knows where the inspiration that will carry someone onward for the rest of their life may come from? The possibilities are limitless.'

**Tim Peake,
Soldier, Pilot, Parent and Astronaut**

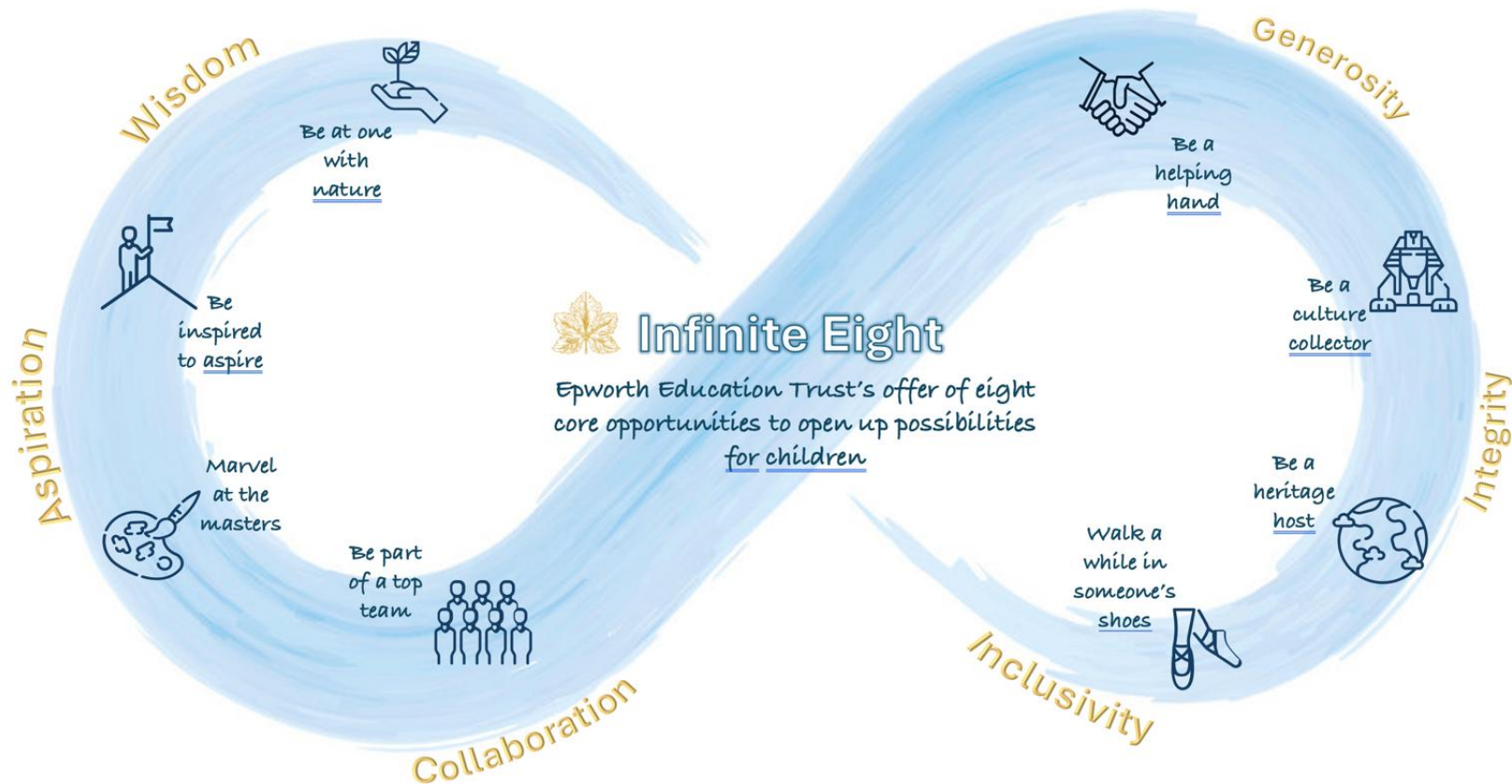
'...For every child and young person to flourish in school and beyond.'

Epworth Education Trust
Education Strategy



What is the 'Infinite Eight' strategy?

The 'Infinite Eight' strategy outlines Epworth's offer of eight opportunities for children to enjoy meaningful experiences beyond the taught curriculum during their time in our Epworth Trust schools.



These eight opportunities have been selected as they represent many wide-ranging opportunities for children to have experiences and develop skill-sets that can support their personal development and growth.

These opportunities have also been designed with three key purposes in mind. These are to support schools:



to align with Epworth Trust's vision and values of Aspiration; Collaboration; Generosity; Inclusivity; Integrity and Wisdom



to use the NHS's five steps to promote good mental health
Learn new skills; Be active; Connect with others; Give to others; Be aware (mindfulness)



to complement aspects of SMSC provision, promoting British Values

Within each of the eight opportunities is a set of core experiences (eighteen in total) that will be offered to our children throughout our Epworth Education Trust schools.

Why is the strategy called 'Infinite Eight'?

The choice of the use of eight and the infinity sign have a certain symbolism. First infinity suggests endless possibilities which these opportunities may present for personal development and self-growth. The infinity symbol is also an inclusive symbol as it has been chosen by some charities to raise awareness of neurodiversity. The number eight is considered auspicious in Chinese culture and is synonymous with prosperity, whilst in Japan it is synonymous with growth. It is certainly hoped that the 'Infinite Eight' strategy will prompt the potential for prosperity, personal growth and limitless possibilities for all!

How can our Epworth schools use and implement the 'Infinite Eight' strategy?

The 'Infinite Eight' strategy has been written to offer eight core opportunities to all the children within Epworth Trust. These opportunities will be experienced over the course of their primary school years and will hopefully leave a valuable impression on their lives. Whilst these opportunities include a set of core experiences common to all Epworth schools, there is room for flexibility in that schools can choose 'the when', 'the where' and 'the how' these experiences are going to happen.

Schools are not solely limited to the core experiences. They may wish to offer additional experiences with the eight opportunities and this document includes some suggested ways in which schools could do that. However, the prime purpose of this strategy is to ensure all Epworth children receive parity of this core experience offer. An example of how a school might plan and deliver Infinite Eight is available in Appendix A. A blank planning proforma is also available in Appendix B.

Recording Infinite Eight Experiences


Often the value in making a record of something is in the sharing of it with others. Whole class floor-books of the children's Infinite Eight journey would be a useful way of looking back over time at these opportunities and their collection of experiences. Children should be encouraged to revisit their memories and thoughts by sharing the floor-books together. These books should be passed up with the children as they change classes so that by the time they reach the end of Year 6 they will have compiled a considerable portfolio of photographs, drawings, annotations, post-it note thoughts and responses of these core experiences. All children should be represented in the floor-book whether it through a photograph; drawing; post-it note response or thought bubbles or other means of recording.


Individual memories can be celebrated with a pin badge linked to one of the eight core experiences. Children could also develop their own mini version of a floor-book personalising their experiences.


Supporting Church School Ethos - Linking Infinite Eight with the SIAM Interview Questions


Infinite Eight can be used to deliver aspects of our Christian vision and nurture our Christian ethos within our schools as the eight opportunities are underpinned by Epworth Education Trust's core values. As such delivery of Infinite Eight should offer supporting evidence of how the school is delivering key aspects of its church school responsibilities and be useful for each school's SIAMs self-evaluation. This document includes how each of the opportunities in Infinite Eight may be used to support some of the SIAMs IQs. Also included in this document is suggested wording that could be included in school's SIAMs self-evaluation. This document is available in Appendix C


What are the eight opportunities offered in the ‘Infinite Eight’ Strategy?


	Be at One with Nature			<p>‘In all things of nature there is something of the marvellous’ Aristotle</p>
	Epworth’s Vision and Values:	SMSC and British Values:	NHS Mental Health Steps:	
	Wisdom Aspiration	Respect for the environment	Be Aware (Mindfulness) Be Active	
Epworth Core Experience Offer	<p>Every child will have chance to be at one with nature to</p> <ul style="list-style-type: none"> - grow and eat their own food - Sleep under /see the stars - Go on a welly walk and gather natural materials to make a work of art 			
Intended Aims	<p>To experience awe, wonder and the beauty in our world To experience our senses e.g. wind in our hair, snowflakes melting on our tongues, experiencing the vastness of the night sky etc.</p> <p>To appreciate nature’s bounty e.g. eat freshly picked blackberries; grow your own food</p>			
Links to SIAMs IQs	<p><i>IQ2 How does the curriculum reflect the school’s theologically rooted Christian vision?</i> <i>b) How is spiritual development an intrinsic part of the curriculum?</i></p>			
	<p>IQ2 b) Infinite Eight is designed to develop children’s spirituality by offering practical experiences to actively live out and enhance their spiritual lives. This could be to take a quiet moment of reflection in a place of worship or to be at one with God’s creation experiencing the awe and wonder of being under the stars or maybe through relationships with others and the connections they make during a heritage celebration.</p>			
Schools may consider other additional activities	<p>Visit National Trust 50+ things to do before you are 11¼</p> <ul style="list-style-type: none"> - Make a den, climb a hill, etc. - Have a snow experience 			


	Walk a While in Someone's Shoes			<p>'You are the Body of Christ. Each one of you is part of it.'</p> <p>St Paul 1 Corinthians 12-27</p>
	Epworth's Vision and Value:	SMSC and British Values:	NHS Mental Health Steps:	
	Inclusivity Integrity	Respect and Tolerance Individual liberty	Connect with others	
Epworth Core Experience Offer	<p>Every child will take part in</p> <ul style="list-style-type: none"> - an awareness raising day that supports their understanding that some people may live differently to them. - a Fairtrade Event 			
Intended Aims	<p>Recognise that people are unique and different to one another and may live differently e.g. of a different faith; managing a disability; living in a war zone; seeking refuge</p> <p>Learn to live with difference well.</p>			
Links to SIAMs IQs	<p><i>IQ5 How does the school's theologically rooted Christian vision create an active culture of justice and responsibility?</i></p> <p>a) <i>How does the theologically rooted Christian vision enable positive relationships that balance individual freedom and rights, with responsibility towards others?</i></p> <p>b) <i>How does this culture encourage justice and courageous advocacy, enabling pupils to make ethical choices and to be agents of change?</i></p>			
	<p>IQ5 a) and IQ5 b) Epworth's Infinite Eight has the following core experiences which supports and value each person as an individual, 'Precious in His Sight'.</p> <p>- 'Walk a While in Someone's Shoes' is used as an opportunity to broaden understanding so that children can develop an informed view rather than one based on potential misinformation, uninformed bias or intolerance.</p>			
Schools may consider other additional activities	<p>Inspirational speaker - stories of courage - everyday heroes - hearing someone speak who has a disability or a protected characteristics</p> <ul style="list-style-type: none"> - 'Dirt is Good' campaign run by Persil that supports children to be advocates of change 			


	Be Inspired to Aspire			<p>'If we all did the things we are capable of, we would literally astound ourselves.'</p> <p>Thomas Edison</p>
	Epworth's Vision and Values:	SMSC and British Values:	NHS Mental Health Steps:	
	Aspiration Wisdom	Build self-knowledge, self-esteem and self-confidence	Learn New Skills	
Epworth Core Experience Offer	<p>Every child will have the chance to be inspired to aspire by:</p> <ul style="list-style-type: none"> - listening to an inspirational speaker live who has achieved/done/experienced something significant - learn a new skill not on the curriculum 			
Intended Aims	<p>To inspire awe in the achievements of another</p> <p>Encourage their own self-esteem to hold their own personal aspirations (Della Bartle 'if it possible for someone, it is possible for me.')</p> <p>To learn a new skill and experience giving something a go e.g. circus juggling skills</p>			
Links to SIAMs IQs	<p><i>IQ2 How does the curriculum reflect the school's theologically rooted Christian vision?</i></p> <p><i>d) How, specifically, does the Christian vision shape the learning experience for pupils who are deemed to be vulnerable and/or disadvantaged?</i></p>			
	<p>IQ2 d) Infinite Eight is an inclusive strategy that gives parity of experience in its offer to pupils. Disadvantaged pupils will have the opportunity to take part in experiences that may have been financially or stereotypically considered socially out of reach for some families. 'Marvel at the Masters' is an experience that allows children to see a great work of art up close and personal whilst 'Inspired to Aspire' experience will give children encouragement to aspire by listening to an inspirational speaker.</p>			
Schools may consider other additional activities	<p>Online film clips e.g. Tim Peake video clips</p> <p>Creating a great library section on inspirational people with autobiographies/biographies</p> <p>Different playground equipment e.g. juggling balls?</p>			

	Be a Helping Hand			<p>'How wonderful it is that nobody need wait a single moment before starting to improve the world.'</p> <p>Anne Frank</p>
	Epworth's Vision and Values:	SMSC and British Values:	NHS Mental Health Steps:	
	Generosity Integrity	-show initiative -contribute positively to society	Giving to Others Connect with others	
Epworth Core Experience Offer	<p>Every child will understand the importance of giving a helping hand:</p> <ul style="list-style-type: none"> - by taking part in a community activity - organise a fund raiser for a local charity 			
Intended Aims	<p>To recognise that we can help others who may be in need to do all the good we can</p> <p>To share our talents and skills with others</p> <p>To support the community</p>			
Links to SIAMs IQs	<p><i>IQ5 How does the school's theologically rooted Christian vision create an active culture of justice and responsibility?</i></p> <p><i>a) How does the theologically rooted Christian vision enable positive relationships that balance individual freedom and rights, with responsibility towards others?</i></p> <p><i>b) How does this culture encourage justice and courageous advocacy, enabling pupils to make ethical choices and to be agents of change?</i></p>			
	<p>IQ5 a) and IQ5 b) Epworth's Infinite Eight has the following core experiences which supports and value each person as an individual, 'Precious in His Sight'.</p> <p>- 'Be a Helping Hand' is designed for children to be active in the support of others be it the community or a more local or global event such as Fairtrade challenge to support understanding of fairness and equity.</p>			
Schools may consider other additional activities	<p>Organise a local fundraiser or support community events and initiatives</p> <p>Raise awareness of and support an international cause e.g. All We Can</p> <p>Gardening in the local community</p> <p>(Carol) Singing at a local residential care home/local supermarke</p>			

	Be a Culture Collector			<i>'I am seeking, I am striving, I am in it with all my heart.'</i> Vincent Van Gogh
	Epworth's Vision and Values:	SMSC and British Values:	NHS Mental Health Steps:	
	Wisdom Aspiration	Respect cultural traditions own and of others	Connect with others	
Epworth Core Experience Offer	Every child will be a culture collector by: -having a quiet moment in a place of worship - learning a fun fact on a museum visit.			
Intended Aims	To gain greater experiences – either historical, religious or cultural To see parts of the wider world beyond their own community Understand and respect traditions and/or past events that have shaped our world today			
Links to SIAMs IQs	<i>IQ2 How does the curriculum reflect the school's theologically rooted Christian vision? d)How, specifically, does the Christian vision shape the learning experience for pupils who are deemed to be vulnerable and/or disadvantaged?</i>			
	IQ2 d) Infinite Eight is an inclusive strategy that gives parity of experience in its offer to pupils. Disadvantaged pupils will have the opportunity to take part in experiences that may have been financially or stereotypically considered socially out of reach for some families. 'Marvel at the Masters' is an experience that allows children to see a great work of art up close and personal whilst 'Inspired to Aspire' experience will give children encouragement to aspire by listening to an inspirational speaker. Whilst 'Be a Culture Collector' will include a visit to museums or a place of worship.			
Schools may consider other additional activities	Visits – theatre; museum; place of religious worship; orchestra hall Visitors to school – History workshop, visiting drama group, author visits World Book Day – celebrate great literature			

	<h2>Be a Heritage Host</h2>			<p>'The heritage of the past is the seed that brings forth the harvest of the future.'</p> <p style="text-align: right;">Wendell Phillips</p>
	Epworth's Vision and Values:	SMSC and British Values:	NHS Mental Health Steps:	
	Wisdom Aspiration	Respect cultural traditions own and of others	Connect with others	
Epworth Core Experience Offer	Each child will be a heritage host by connecting with the older generation inviting them to an event to mark the school's heritage.			
Intended Aims	To understand our national, local and/or personal heritage and feel connected to our past To create a sense of belonging To support our understanding of our community and why it is how it is today To understand and respect traditions of the local community			
Links to SIAMs IQs	<p><i>IQ5 How does the school's theologically rooted Christian vision create an active culture of justice and responsibility?</i></p> <p>c) <i>As an outworking of the theologically rooted Christian vision, what partnerships are important to the school? How do they impact positively and reciprocally on people's lives?</i></p> <p>IQ5 c) The Infinite Eight strategy encourages working with the community at a local and global level. All experiences are design to support connection and/or partnership with others. There are some very specific experiences that are explicitly designed to enhance community partnerships. 'Be a Heritage Host' is one such event where the school ...<i>(insert Heritage event)</i></p>			
Schools may consider other additional activities	Host a Heritage Day e.g. National – St George's Day Support local community events – Church walking day; Easter egg rolling; Visits in the locality – what heritage opportunities are on the doorstep? Heritage visitors – grandparents? Local history expert? Remembrance Day			

	Be Part of a Top Team			<p>'Unity is strength...when there is teamwork and collaboration, wonderful things can be achieved.'</p> <p>Mattie Stepanek</p>
	Epworth's Vision and Values:	SMSC and British Values:	NHS Mental Health Steps:	
	Collaboration Inclusivity	-Accept responsibility for behaviour - Show initiative	Connect with others	
Epworth Core Experience Offer	<p>Every child will have the opportunity to be part of a top team to:</p> <ul style="list-style-type: none"> - taking part in an enterprise event to design and make a product - work on problem-solving challenge outdoors 			
Intended Aims	<p>To create a sense of belonging</p> <p>To understand that sometimes teamwork can result in greater achievements than solo efforts</p> <p>To develop teamwork skills e.g. cooperation, clear communication, turn-taking; asking for help, giving help etc.</p> <p>To enjoy the social aspect of working together</p>			
Links to SIAMs IQs	<p><i>IQ5 How does the school's theologically rooted Christian vision create an active culture of justice and responsibility?</i></p> <p><i>a) How does the theologically rooted Christian vision enable positive relationships that balance individual freedom and rights, with responsibility towards others?</i></p>			
	<p>IQ5 a) Epworth's Infinite Eight has the following core experiences which supports and value each person as an individual, 'Precious in His Sight'.</p> <p>- 'Be part of a Top Team' to strengthen and celebrate the value of a teamwork and supporting, listening and encouraging one another.</p>			
Schools may consider other additional activities	<p>Enterprise event</p> <p>Great Egg Race – DT team problem solving</p> <p>Sports – team games, relay race, Ultimate Frisbee</p> <p>Be part of something big – Flashmob; Young Voices; Dance from the Heart etc.</p> <p>Outdoor education – raft-building etc.</p>			

	Marvel at the Masters			<i>'If I have seen further, it is by standing on the shoulders of giants.'</i> Sir Isaac Newton
	Epworth's Vision and Values	SMSC and British Values:	NHS Mental Health Steps:	
	Aspiration Wisdom	Respect cultural traditions own and of others	Learn New Skills	
Epworth Core Experience Offer	Every child will have the chance to marvel at the masters and <ul style="list-style-type: none"> - see a great work by a famous artist - experience a live music performance - experience live theatre - understand the achievement of a great scientist 			
Intended Aims	To experience awe and wonder in our world by admiring the significant achievements of others To inspire our own artists, musicians, actors and scientists			
Links to SIAMs IQs	<i>IQ2 How does the curriculum reflect the school's theologically rooted Christian vision?</i> <i>d) How, specifically, does the Christian vision shape the learning experience for pupils who are deemed to be vulnerable and/or disadvantaged?</i>			
	IQ2 d) Infinite Eight is an inclusive strategy that gives parity of experience in its offer to pupils. Disadvantaged pupils will have the opportunity to take part in experiences that may have been financially or stereotypically considered socially out of reach for some families. 'Marvel at the Masters' is an experience that allows children to see a great work of art up close and personal whilst 'Inspired to Aspire' experience will give children encouragement to aspire by listening to an inspirational speaker or to nurture a new talent.			
Schools may consider other additional activities	Celebrate great sporting achievements; Create in school Pop-Up Galleries to showcase children's own art work			



Appendix A - Exemplar Planning – Delivering the Infinite Eight Strategy at School Level

Infinite 8 Opportunities	Infinite 8 Core Experiences	YR	Y1	Y2	Y3	Y4	Y5	Y6	How will the school deliver the Infinite 8 offer?
Be at One with Nature	Go on a Welly Walk gathering natural materials for a work of art	✓							YR's giant work of art in the outdoors
	Sleep under/see the stars							✓	Y6 residential – Tower Wood
	Have a food-to-fork experience	✓	✓		✓				YR – grow your own beanstalk Y1 – nurture, harvest and eat freshly-picked strawberries from the school garden Y3 Food-to-fork topic – growing vegetables in the school garden harvest and make soup.
Be Part of a Top Team	Create a dream team and work on an outdoor challenge.			✓			✓	✓	Y2 problem solving activity at Rock and River Y5 Trip to the Anderton Centre to complete a raft-building challenge Y6 residential – Tower Wood
	Dream big and make something as part of productive team					✓		✓	Y4 Great Egg Race – design and building something to transport an egg safely from one side of the classroom to another Y6 Enterprise Event
Be a Helping Hand	Organise a fundraiser for a local charity.	✓	✓	✓	✓	✓	✓	✓	School Council to lead on planning and organising fund-raising with children to choose charity Whole school to support local food bank (Lent) Whole school (Harvest) - global - 'All We Can' initiative – local - food collection for Bay 6 charity for homeless under 18s
	Carry out an activity for the benefit of your community.			✓	✓				Y2 carol singing for the local residential care home Y3 gardening at the local residential care home and in the community Peace Garden
Be Inspired to Aspire	Listen to someone with an inspiring story.		✓		✓	✓	✓	✓	Y1 Grandparents talk KS2 Careers Day Talk by Laboratory Scientist who worked on developing vaccines to counter COVID
	Have a go at developing your talent by learning a fun new skill!	✓	✓					✓	YR Tots on Tyres Y1 Circus Skills workshop Y6 Bikeability
Walk a While in Someone's Shoes	Learn more about Fairtrade	✓	✓	✓	✓	✓	✓	✓	Whole school participation in Fairtrade Fortnight Y5 carry out a Fairtrade activity to build on their unit of work
	Take part in an Awareness Day and think about some people who may live differently to you.	✓	✓	✓	✓	✓	✓	✓	Whole School Autism Awareness Day with speaker Andy Moffatt's 'No Outsiders' Workshop

Infinite 8 Opportunities	Infinite 8 Core Experiences	YR	Y1	Y2	Y3	Y4	Y5	Y6	How will the school deliver the Infinite 8 offer?
Marvel at the Masters	See a famous work by an artist.				✓				Y3 Trip to the Walker Art Gallery – can they find Henry VIII's portrait painted by Holbein?
	Watch a thespian tread the boards.				✓	✓	✓	✓	KS2 Trip to The Octagon to see Rudyard Kipling's Jungle Book
	Be wowed by the work of a super scientist		✓	✓	✓	✓	✓	✓	Each year group to study a Scientist in Science Week
	Feel the beat – hear live music			✓		✓			Y2 trip to Liverpool Philharmonic Y4 trip to Liverpool Philharmonic
Be a Culture Collector	Learn a fun fact on a museum visit.			✓	✓				Y2 Trip to the Science Museum Y3 trip to Liverpool's Egyptology display
	Have a quiet moment in a place of worship					✓			Y4 visit to Liverpool's Jewish Synagogue
Be a Heritage Host	Connect the generations and host a heritage event inviting older people in the community.	✓	✓	✓	✓	✓	✓	✓	YR Teddy Bear's Picnic with grandparents Y1 - Grandparents sharing stories of the past Y2-Y6 St George's Day with grandparents -Y2 singing songs from different decades -Y3 Reenactment of George and the Dragon Y4- Dance the Maypole Y5 – Play traditional sports such as rounders and cricket with grandparents Y6 – serve cream teas

Appendix B - Blank Planning Proforma to support school's delivery of the Infinite Eight Strategy

Infinite 8 Opportunities	Infinite 8 Core Experiences	YR	Y1	Y2	Y3	Y4	Y5	Y6	How will the school deliver the Infinite 8 offer?
Be at One with Nature	Go on a Welly Walk gathering natural materials for a work of art								
	Sleep under/see the stars								
	Have a food-to-fork experience								
Be Part of a Top Team	Create a dream team and work on an outdoor challenge.								
	Dream big and make something as part of productive team								
Be a Helping Hand	Organise a fundraiser for a local charity.								
	Carry out an activity for the benefit of your community.								
Be Inspired to Aspire	Listen to someone with an inspiring story.								
	Have a go at developing your talent by learning a fun new skill!								
Walk a While in Someone's Shoes	Learn more about Fairtrade								
	Take part in an Awareness Day and think about some people who may live differently to you.								
Marvel at the Masters	See a famous work by an artist.								
	Watch a thespian tread the boards.								
	Be wowed by the work of a super scientist								
	Feel the beat – hear live music								
Be a Culture Collector	Learn a fun fact on a museum visit.								
	Have a quiet moment in a place of worship								
Be a Heritage Host	Connect the generations and host a heritage event inviting older people in the community.								

Appendix C - Exemplar inclusion of the Infinite Eight Strategy as part of the SIAMs Self-Evaluation Template

Inspection Questions (IQ) How then shall we live? <i>(This information is key to enabling inspectors to make evidence-based judgements.)</i>	
Inspection Question (IQ)	Impact of provision and sources of evidence
<p>IQ1 How does the school’s theologically rooted Christian vision enable pupils and adults to flourish?</p> <p>a) How is the Christian vision expressed? For example, is it through values that are faithful to the Anglican/Methodist foundation of the school?</p> <p>b) What other strategies do leaders employ to ensure that the theologically rooted Christian vision is a living reality that enables pupils and adults to flourish?</p> <p>c) How do leaders know that the theologically rooted Christian vision is enabling people to flourish?</p> <p>d) How does the vision of the trust resonate with the school’s theologically rooted Christian vision in a way that enhances the work of the school and its Christian foundation?</p>	<p><i>IQ1 d) The school is a part of Epworth Education Trust and one of the ways that the school adopts the Trust’s vision and values is through the Infinite Eight Strategy. Infinite Eight is a Trust-wide strategy that supports the delivery of extra-curricular core experiences that are designed to encourage potential and personal growth. They are intrinsically linked to the Trust six core values and all experiences support these values in a specific way.</i></p>
<p>IQ2 How does the curriculum reflect the school’s theologically rooted Christian vision?</p>	<p><i>IQ2 a) The school implements the Trust’s Infinite Eight Strategy which is part of the school’s extra-curricular offer. Trust values are explicitly</i></p>

<p>a) In what ways does the theologically rooted Christian vision shape the curriculum, including the extra-curricular offer?</p> <p>b) How is spiritual development an intrinsic part of the curriculum?</p> <p>c) How do leaders know that the curriculum is having the intended effect for pupils?</p> <p>d) How, specifically, does the Christian vision shape the learning experience for pupils who are deemed to be vulnerable and/or disadvantaged?</p> <p>e) How does being part of the trust enhance the school's curriculum?</p>	<p><i>visited within a set of experiences based on the Trust's theologically-rooted vision. Infinite Eight has eight core experiences covering different aspects of the school's Christian mission.</i></p> <p><i>IQ2 b) Infinite Eight is designed to develop children's spirituality by offering practical experiences to actively live out and enhance their spiritual lives. This could be to take a quiet moment of reflection in a place of worship or to be at one with God's creation experiencing the awe and wonder of being under the stars or maybe through relationships with others and the connections they make during a heritage celebration.</i></p> <p><i>IQ2 c) Infinite Eight floor-books are used as a reflection of the children's experiences e.g. they are used to reflect thoughts and feelings through drawings and annotations or captured moments in photographs. Floor-books are also used to revisit to not only support children's memories but to help them see and understand their experience and what they have gained from it. Pupil voice interviews about Infinite Eight have also told us that... (Insert monitoring findings)</i></p> <p><i>IQ2 d) Infinite Eight is an inclusive strategy that gives parity of experience in its offer to pupils. Disadvantaged pupils will have the opportunity to take part in experiences that may have been financially or stereotypically considered socially out of reach for some</i></p>
---	--

	<p>families. ‘Marvel at the Masters’ is an experience that allows children to see a great work of art up close and personal whilst ‘Inspired to Aspire’ experience will give children encouragement to aspire by listening to an inspirational speaker. Whilst ‘Be a Culture Collector’ will include a visit to museums or a place of worship.</p>
--	--

<p>IQ4 How does the school’s theologically rooted Christian vision create a culture in which pupils and adults are treated well?</p> <p>a) How does the theologically rooted Christian vision enable all to live well together in an inclusive, dignifying, and equitable culture?</p> <p>b) How do school policies and practice create a culture in which people’s wellbeing is enhanced?</p> <p>c) How is enabling good mental health for all central to the school’s work?</p> <p>d) As a result of the theologically rooted Christian vision, what effective strategies are in place that help pupils and adults, including those deemed to be vulnerable and/or disadvantaged, at difficult times?</p> <p>e) How does the trust contribute to and enhance the inclusion and wellbeing of pupils and adults, ensuring that all are treated well?</p>	<p><i>IQ4 a) Infinite Eight supports the Trust values of Inclusivity and Generosity. They are two particular experiences that specifically support inclusivity, dignity and equity. ‘Walk a While in Someone’s Shoes’ allows children to understand a life that may be lived differently to theirs. Each school in the Trust hosts an Awareness Day that gives insight and some understanding of different life experiences of others. This year the school has held a...(insert) Awareness Day during which children...(insert activities covered). Feedback from the child said that ...(insert monitoring findings from pupil voice). The second experience within Infinite Eight is ‘Be a Helping Hand’ with the aim of giving generously in the community and also to plan and organise a fund-raising activity for a local cause. This year our school has (insert community event) which was well-received by (insert group in the community who benefited) and fund-raised for (insert fund-raiser).</i></p> <p><i>IQ4 c) The Trust’s Infinite Eight Strategy has been designed to support positive mental health and the NHS five steps to promote good mental health are woven into and signposted throughout the</i></p>
---	---

	<p><i>strategy. Within the eight core experiences, children have the opportunity to learn new things, be active, connect with others, give to others and be aware (mindful).</i></p>
<p>IQ5 How does the school’s theologically rooted Christian vision create an active culture of justice and responsibility?</p> <p>c) How does the theologically rooted Christian vision enable positive relationships that balance individual freedom and rights, with responsibility towards others?</p> <p>d) How does this culture encourage justice and courageous advocacy, enabling pupils to make ethical choices and to be agents of change?</p> <p>e) As an outworking of the theologically rooted Christian vision, what partnerships are important to the school? How do they impact positively and reciprocally on people’s lives?</p> <p>f) How does the trust make a positive impact on the culture of the school?</p>	<p><i>IQ5 a) and IQ5 b) Epworth’s Infinite Eight has the following core experiences which supports and value each person as an individual, ‘Precious in His Sight’</i></p> <p><i>-‘Be a Helping Hand’ is designed for children to be active in the support of others be it the community or a more local or global event such as Fairtrade challenge to support understanding of fairness and equity.</i></p> <p><i>-‘Be part of a Top Team’ to strengthen and celebrate the value of a teamwork and supporting, listening and encouraging one another.</i></p> <p><i>-‘Walk a While in Someone’s Shoes’ is used as an opportunity to broaden understanding so that children can develop an informed view rather than one based on uninformed bias or intolerance.</i></p> <p><i>IQ5 c) The Infinite Eight strategy encourages working with the community at a local and global level. All experiences are design to support connection and/or partnership with others. There are some very specific experiences that are explicitly designed to enhance community partnerships. ‘Be a Heritage Host’ is one such event where the school ...(insert Heritage event)</i></p> <p><i>IQ5 d) The Trust makes a positive impact on the culture of the school in part through the design and the school’s delivery of the Infinite</i></p>

	<p><i>Eight Strategy. Whilst this is a Trust-wide strategy, schools can contextualise and tailor the experiences so that they are meaningful and relevant to the school and the community it serves.</i></p>
--	--