



Nutgrove Methodist Primary School

Newsletter

AUTUMN TERM - THURSDAY 13TH NOVEMBER 2025



A message from Mrs Taylor

It has been a truly lovely week in school, filled with meaningful and thoughtful reflections as we have marked Remembrance Day together. The children have shown great empathy and understanding as we explored the importance of remembering those who have served and sacrificed for our country.

All pupils have created some beautiful artwork, including striking silhouettes and poppy designs that capture the spirit of remembrance so thoughtfully. Many children have also proudly shared their own family histories, bringing in photographs, medals, and stories of bravery from relatives who served in the world wars – moments that have inspired us all.

We are also delighted to see our new Year 6 and EYFS buddies settling into their roles so well. They have been wonderful role models, supporting our youngest children at lunchtimes, during play, and in worship. It's been heartwarming to see these new friendships blossom and the sense of care and community that continues to grow across our school.

To round off the week, we have enjoyed a fun and colourful Own Clothes Day in support of Children in Need. It was lovely to see so many dots, spots, Pudsey merchandise and bright outfits across school today! A huge thank you to all our parents and carers for your kind donations – your generosity will make a real difference to such a worthwhile cause.

Contacting School

Please speak to SLT on the gate or class teachers at the end of the day as first port of call.



01744 678400

office@nutgrove.epworthtrust.org.uk



Attendance Matters

WEEKLY WINNERS!

- 1st Highest attendance - Y4
- 2nd Highest attendance - Y3

The whole school attendance this week is 94.88%



ATTENDANCE Why is it important?

Attendance	Days absent	Weeks absent	Lessons missed
95%	9 days	2 weeks	50 lessons
90%	19 days	4 weeks	100 lessons
85%	29 days	6 weeks	150 lessons
80%	38 days	8 weeks	200 lessons
75%	48 days	10 weeks	250 lessons
70%	57 days	11.5 weeks	290 lessons

89% or below
Drastic effect on academic achievement

96% - 90%
Cause for Concern

100% - 97%
Excellent!



Next Week

Monday 17.11.25 Parent's Evening - No After School Clubs

Tuesday 18.11.25 Drawing Club Y3 Y4 until 4.15pm
Arts and Crafts Y1 Y2 until 4.15pm
Rugby Y5 Y6 until 4.15pm

Wednesday 19.11.25 Deacon Helen's Worship
Ethos Committee Meeting
Football Y3 Y4 until 4.15pm

Thursday 20.11.25 Dental health Hygiene workshops in EYFS, Y1 and Y2 with School Nurse
Height and Weight EYFS and Y6
Karate Y1 Y2 until 4.15pm
School Council Meeting

Friday 21.11.25 9am Celebration Praise (check dojo/Arbor Wednesday for winners' invites)

This Week's Awards

Well done to our Award winners this week:

Christian
Values
Champion



Star of the
Week



EYFS Aaliyah	EYFS Xiana
Year 1 Joshua	Year 1 Lucia
Year 2 Alivia	Year 2 Tise
Year 3 Oscar L	Year 3 Valerie
Year 4 Oscar	Year 4 Joseph B
Year 5 Poppy	Year 5 Daisy
Year 6 Eliza	Year 6 Jack

Mrs Taylor's Kindness Award

Well done to the following children who received kindness awards this week for 'being' kind: Minahil, Olivia B, Olivia M and Isla F, nominated by Mrs Strong, all helped me putting books away from our new order during their lunchtime

Reuben in Y6, nominated by Mrs Strong, dashed back to hold the door for her when he could see she had my hands full.

Aariyan in Y6, nominated by Miss Maguire, for being kind and helping all EYFS get drinks at dinner time.

Musa in Y2, nominated by Mrs Strong, as he helped another child in y2 class to find the right page in his book when he was struggling.

Rohan in Year 1, nominated by Miss Chalmers, for helping friends to make sure all their belongings are safe every morning without being asked.

Reign in year 4, nominated by Mrs Ibrahim, for helping a friend come to the office when asked.

Remi in Year 2, nominated by Mrs Potter, for being kind helping a friend who was upset.



Mrs Best's Golden Broom Award

Winner: Year 2

Well done winning Mrs Best's Golden Broom Award this week for always being so clean and tidy in your classroom. Well done year 2.

Worship

Epworth Worship Together

Each week we have a different focus for our Epworth Worship. A film is shared between our family of Trust schools - a different film being produced each week by a different school. It is lovely to see the children of our Trust taking a lead in a different aspect of worship. An Epworth Worship Together Resource sheet is produced every week, which is sent home with this newsletter. We hope you enjoy explore the activities and reflections within these resource at home.

This week's theme was all about
Remembrance Day



Nutgrove Collective Worship

This week in our worships, we have been exploring two important themes.

As part of Anti-Bullying Week, we discussed the importance of kindness, respect, and celebrating what makes each of us unique - including the fun and meaning behind Odd Socks Day, which reminds us that being different is something to be proud of. This message is important as we remember that everyone is different, everyone is welcome as part of our No Outsiders.



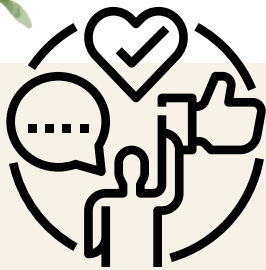
We also took time to reflect on Remembrance Day, thinking about those who have served and sacrificed for our country. The children considered who we remember and why it is important to honour their courage and the peace they helped to protect. We all took part in a two minute silence at 11am on the 11th day.



Nutgrove's Prayer Bear is going home with Mason in Year EYFS

We look forward to seeing the prayers or reflections next week.





Behaviour Focus

Habits for Learning



Nutgrove Methodist
Primary School

Habits for learning



Learning Time

Sit up straight following correct seating position model.

Speak at appropriate volumes.

Raise your hand to show you would like to speak.

Have the same high expectations with all adults that teach you.



This week in worship and in class, our focus has been on Showing Respect, one of our key Habits for Learning.

Each week, we will highlight a different habit as part of our ongoing commitment to developing strong and consistent learning behaviours across the school.

This week we have shone a spot light on speaking at appropriate volumes.

This includes during dinner time too.

Moving Around School	Showing Respect	Taking Pride	Breaktime and Dinner Time	Positive Interactions	Learning Time
<p>Walk on the left.</p> <p>Move around quietly.</p> <p>Look in the direction of travel.</p> <p>Line up in single file.</p> <p>Always accompanied by an adult when moving as a class.</p> <p>Pupil at the front of the line holds the door open for the class.</p> <p>Carry snacks to the playground instead of eating on corridors.</p>	<p>Pick items up from the floor.</p> <p>Hold doors open.</p> <p>Demonstrate good manners.</p> <p>Say thank you.</p> <p>Allow others to pass on corridors (give way).</p> <p>Respond to the Clap-Response signal straight away.</p> <p>Follow the 1-2-3 movement signals for all transitions.</p>	<p>Wear your uniform with pride.</p> <p>Look after books and belongings.</p> <p>Hang coat and bag on peg.</p> <p>Store lunchboxes neatly in the correct tubs.</p> <p>Resources away and chair under table before leaving the room</p> <p>Be a positive role model.</p> <p>Take ownership of the Habits for Learning.</p>	<p>Line up quietly, in a single file line, facing forward when collecting lunch.</p> <p>Collect your drink before you sit down at your table.</p> <p>Eat quietly having conversations on your table.</p> <p>Stay seated whilst eating until directed by an adult to move.</p> <p>Tidy up your own plates. No food to be dropped on the floor.</p> <p>Use reflection area quietly and respectfully.</p> <p>Engage in games with playleaders.</p> <p>Play in your designated zone.</p>	<p>Make eye contact with adults.</p> <p>Say 'good morning' or 'good afternoon.'</p> <p>Say 'please' and 'thank you' when asking for something.</p> <p>Listen when others are speaking and wait your turn to respond.</p> <p>Use kind words.</p>	<p>Sit up straight following correct seating position model.</p> <p>Speak at appropriate volumes.</p> <p>Raise your hand to show you would like to speak.</p> <p>Have the same high expectations with all adults that teach you.</p>

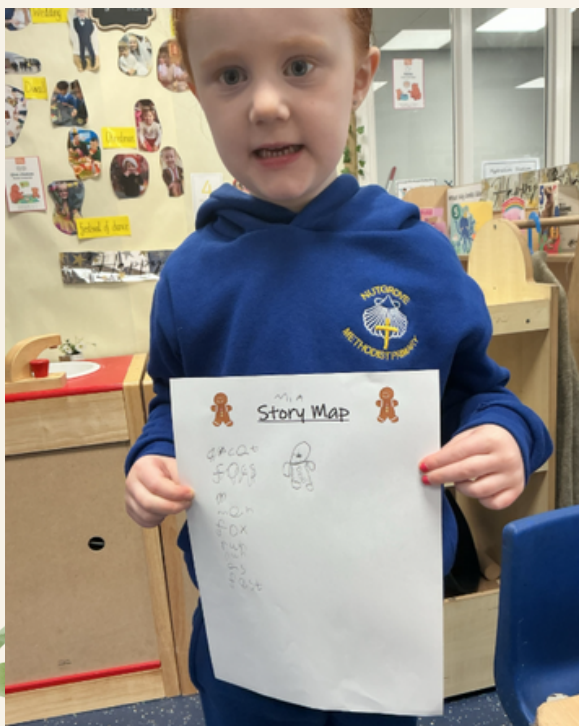
The expectation of pupils



Curriculum Showcase

EYFS

This week in Reception, the children have been immersed in the world of The Gingerbread Man. In Continuous Provision, they've enjoyed retelling the story using small world play, crafting their own gingerbread characters with scented playdough, and designing story maps to sequence the tale. The children have even taken the learning into their own hands, by retelling the story outside during playtime and making songs with the lyrics "run, run, as fast as you can".





Curriculum Showcase

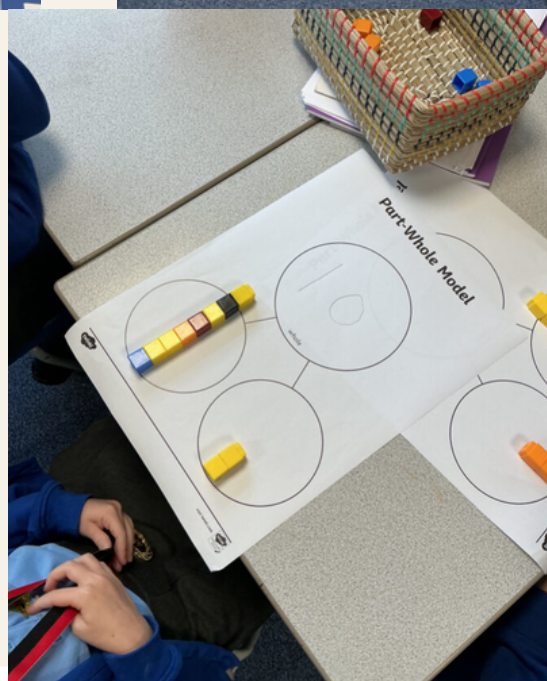
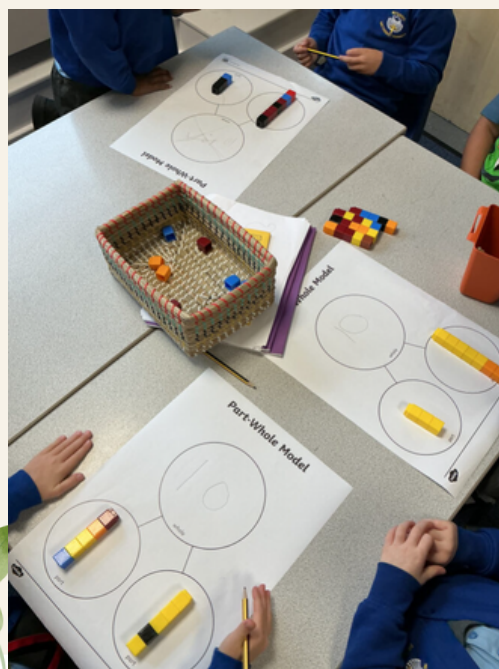
Year 1

Year 1 have had an exciting and productive start to this half-term!

The children have been working incredibly hard across all areas of learning. In Science, they concluded their topic on Seasons by creating stunning end-point artwork. To bring their ideas to life, we visited our Forest School, where the children collected a variety of autumn leaves. These natural treasures were then used to design beautiful autumnal hedgehogs, showcasing both creativity and an understanding of seasonal changes.

In Maths, Year 1 have been deepening their knowledge of Addition and Subtraction, exploring different strategies to solve problems. They have been using part-whole models to represent numbers and develop a strong foundation for mental calculations. It has been wonderful to see their confidence grow as they explain their thinking and work collaboratively.

A huge well done to Year 1 for their enthusiasm and hard work!





Don't
Forget!

Admin Reminders

Breakfast Club Booking

Please book in for breakfast club via Arbor prior to sessions - thank you

Consultation on Providing Milk at Break Times

As a school, we are currently reviewing the provision of milk during break times for KS1 children. While we know many children enjoy having milk, the cost to the school has become increasingly difficult to sustain, particularly as a significant number of families do not contribute towards the cost. The cost of milk is £9 per child, per term - £27 a year per child.

Before making any decisions, we would like to consult with parents and carers to gather your views. Please take a few moments to complete the short survey below to share your thoughts on whether the school should continue to provide milk at break times.

Your feedback is important and will help us make an informed decision that best supports our pupils and the school community.

Thank you for your time and support.

Milk Consultation link: <https://www.surveymonkey.com/r/99JTBSQ>

This has also been sent out on Arbor email - thank you for your responses.

